

PIPING & DRUMMING QUALIFICATIONS BOARD

BASS & TENOR DRUM LEVEL 6

Time Allowed — 1 Hour

- 1 a) Write out 4 bars of monotone rhythm in compound duple time, to include the use of 2 types of rests.

Remember that no two bars should have the same note groupings, even if written in a different order within the bar.



/8

- b) Write out 4 bars of a monotone rhythm in simple triple time.

Remember that no two bars should have the same note groupings, even if written in a different order within the bar.

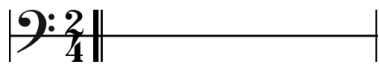


/8

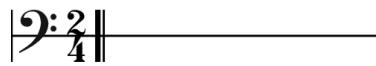
2 Write the named movements on the staves below. All bars must be complete using the time signature provided (additional notes may be required to complete the bar).

(Any visual movement must be from the PDQB visual legend).

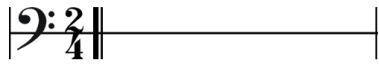
(i) 2 Triplets using quavers



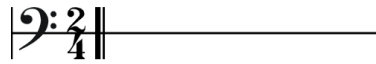
(iii) Inside stall x2 over a quaver rest



(ii) Backwards butterfly over a crotchet rest



(iv) Cartwheel over a minim rest



/8

3 There are two kinds of musical sound. What are they and how are they described?

/2

4 On the staff below, write out the first 8 bars of a 6/8 Jig from memory.

Remember to include the tune name and correct musical notation including all embellishments and repeats where necessary.

Name of tune _____



/16

5 What elements must be present to successfully produce sound? (Explain each one fully and give examples).

6 There are 5 ways in which musical sounds can differ. Name and give an explanation for each.

/10

7 What is meant by the term Tempo?

/2

8 Name the three ways in which Dynamics are shown on the staff.

/3

9 What are Embellishments, Ornaments or Gracenotes and explain their purpose?

/3

10 Describe how you would write Embellishments, Ornaments or Gracenotes.

/2

11 On the staff below, write out the first 8 bars of a Reel from memory.

Remember to include the tune name, time signature and correct musical notation including all embellishments and repeats where necessary.

Name of tune _____

The image shows two blank musical staves. The first staff is a bass clef staff with four vertical bar lines, creating five measures. The second staff is a treble clef staff with a double bar line at the beginning, four vertical bar lines, and a double bar line at the end, also creating five measures.

/16

- 12 Explain the different types of tuning used for bass and tenor drums, including a description and purpose of applying dampening.

	/6
TOTAL	/96