








PIPING & DRUMMING QUALIFICATIONS BOARD

BASS & TENOR DRUM LEVEL 2

Time Allowed — 1 Hour

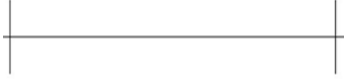
1 Complete the table below on **note names, duration** and **note values**.

The first row in the table has been done for you.

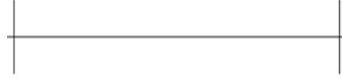
Note	Pitch Name	Duration Name	Duration Value
	D	Quaver	1/8 note
	A		
			1/2 note
	B		
		Quaver	
	D		
			Whole Note

2 (a) On each blank stave below, write the note specified.

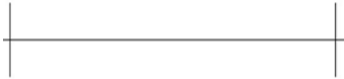
(i) quaver (1/8 note)



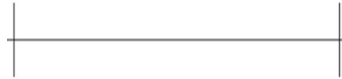
(ii) semi-breve (whole note)



(iii) minim (1/2 note)



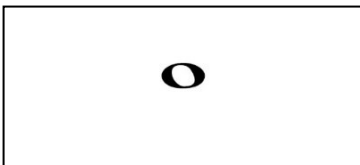
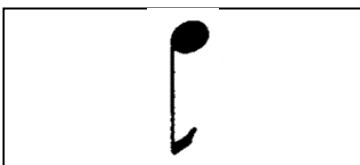
(iv) crotchet (1/4 note)



/8

(b) Using lines match each note type to a note duration (value).

Note Type



Note Duration

Half note

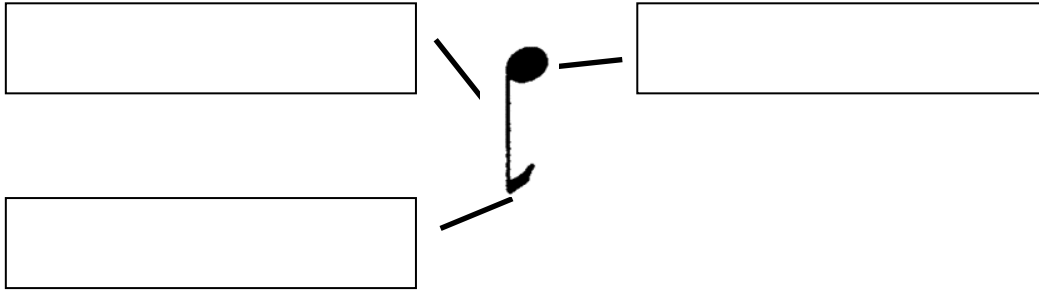
Whole note

Sixteenth note

Eighth note

/3

- 3 The following diagram shows a quaver note. Using the boxes, correctly label the Note Head, the Stem and the Tail of the note.



/3

- 4 (a) What happens to a note when you place a dot after it?

/2

- (b) On the staff below, write two notes that would equal the value of the dotted crotchet shown.



/2

5 (a) Use the space below to draw a single line stave. /1

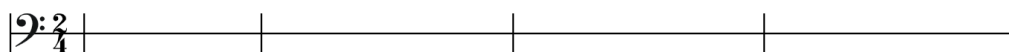
(i) Divide the stave into 4 equal bars using barlines. /1

(ii) Draw the Bass Clef in the correct position on the stave. /2

(b) In each bar on the stave you have drawn, write a single note, notes or note group that are equal in value to two crotchet beats.

(Please show a different example in each bar) /4

6 On the stave below, show how a line of music would be repeated.



/2

