

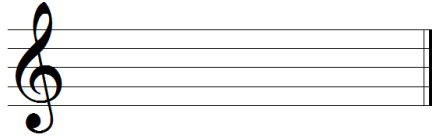
SNARE DRUM SCQF LEVEL 5

Time Allowed — 1 Hour

1 (a) Explain the purpose of the ledger line.

/2

(b) On the staff below draw an example of a ledger line.



/1

2 In the space below draw out the Great Staff.

You must include the following:

- (i) the 3 clefs and middle C
- (ii) the pitch of the bass and tenor drones / drums
- (iii) the bagpipe scale

/12

- 3 Using the time signatures provided, write out 4 bars of a monotone rhythm.

Remember that no two bars should have the same note groupings, even if written in a different order within the bar.

A musical staff with a treble clef and a 3/4 time signature. The staff is divided into four equal measures by vertical bar lines. The top of the staff is capped with a double bar line. The staff is currently empty, intended for the student to write a monotone rhythm.

A musical staff with a treble clef and a 9/8 time signature. The staff is divided into four equal measures by vertical bar lines. The top of the staff is capped with a double bar line. The staff is currently empty, intended for the student to write a monotone rhythm.

4 On the stave below, write out the first 8 bars of a 6/8 quick march from memory.

Remember to include the tune name, time signature and correct musical notation including all embellishments and repeats where necessary.

Name of tune _____

The image shows two musical staves. The top staff begins with a treble clef, followed by a double bar line. At the end of the staff, there is a 'R.' with a small 'L' underneath it. The bottom staff starts with a double bar line and ends with a double bar line. There are several tick marks along both staves, indicating where notes or rests should be placed.

/16

5 (a) On the staff below, write out the first 4 bars of a Reel from memory .

Remember to include the tune name, time signature and correct musical notation including all embellishments and repeats where necessary.

Name of tune _____

A musical staff with a treble clef on the left. A double bar line is positioned at the beginning of the staff. Four vertical bar lines are spaced evenly across the staff. The letter 'R' is written above the staff at the far right end.

/8

(b) Underneath the first bar write the pulse pattern.

/2

