

**SNARE DRUM SCQF LEVEL 4**

**Time Allowed — 1 Hour**

1 On the staff below draw the Treble Clef and explain its purpose.



---

---

---

/3

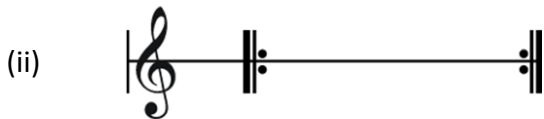
2 On each staff below accurately place an example of a simple time, time signature and explain it's meaning.



---

---

---



---

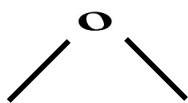
---

---

/8

- 3 Starting from the semibreve drawn below, complete the note value table and state the duration name and value in relation to the semibreve.

Whole note (semi-breve)

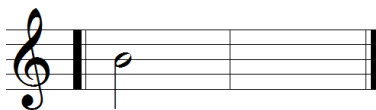


4 (a) Draw the equivalent rests appropriate to the notes given on the staves below.

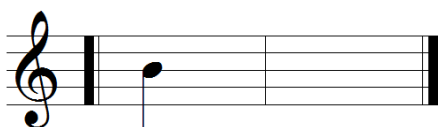
(i)



(ii)



(iii)



(iv)



/8

(b) Look at the note below. Name the note and state how many are equal to the semi-breve.



Name \_\_\_\_\_

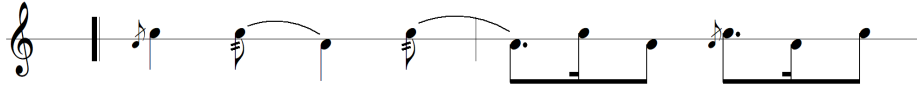
Number \_\_\_\_\_

/2

5 Identify the time signatures in the following bars of music.

Write the time signature in the correct position on each.

(i)

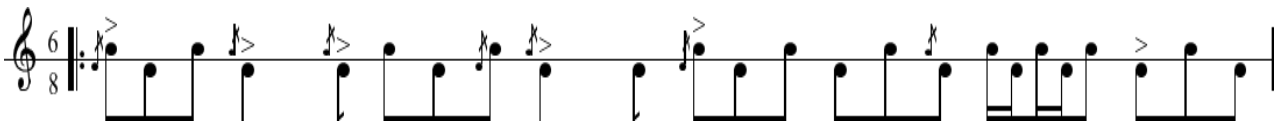


(ii)



/4

6 Place bar lines in the appropriate position, according to the time signature shown.



/3

7 On the staves below, write the named movements.

(i) Right handed flam



(ii) Left handed drag



(iii) Five stroke roll (closed) on the left hand

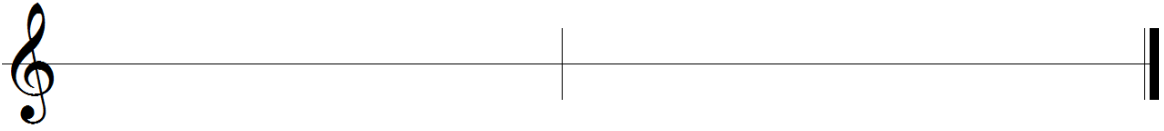


(iv) Triplet using quavers



8 On the monotone line below, write two bars of a compound time rhythm and insert the time signature.

**Each bar must show different note groupings.**



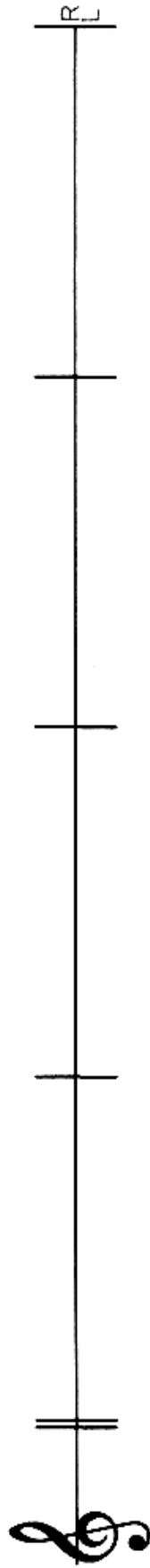
/4

9 On the staff below write out the first 8 bars of a simple time tune from memory.

**Remember to include the tune name, style, time signature and correct musical notation including all embellishments and repeats where necessary.**

Name of tune \_\_\_\_\_

Style of tune \_\_\_\_\_



/16

TOTAL /66