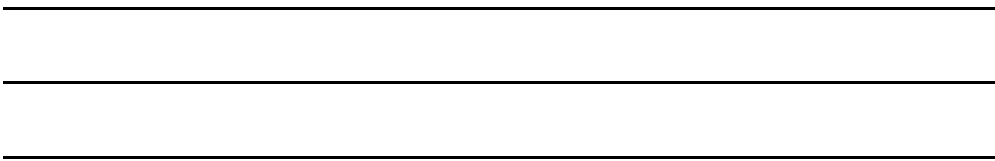


PIPING & DRUMMING QUALIFICATIONS BOARD

BASS & TENOR DRUM LEVEL 4

Time Allowed — 1 Hour

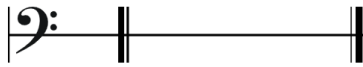
- 1 On the stave below draw the Bass Clef and explain its purpose.



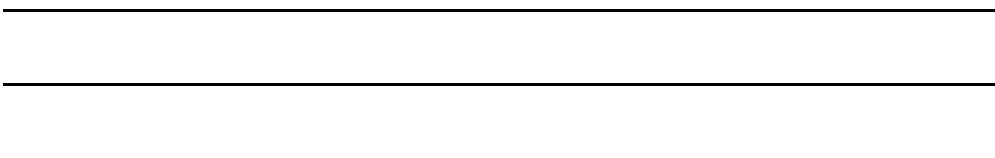
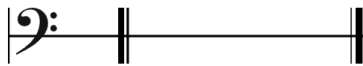
/3

- 2 On each stave below accurately place an example of a simple time, time signature and explain it's meaning.

(i)



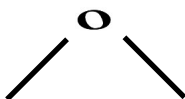
(ii)



/8

3 Starting from the semibreve drawn below, complete the note value table and state the duration name and value in relation to the semibreve.

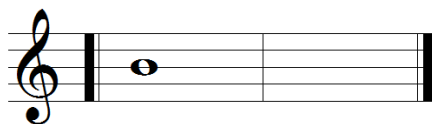
Whole note (semi-breve)



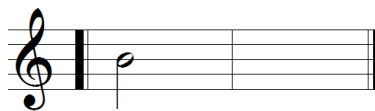
/10

4 (a) Draw the equivalent rests appropriate to the notes given on the staves below.

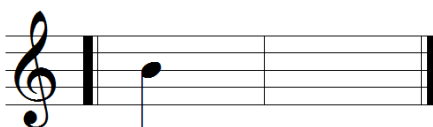
(i)



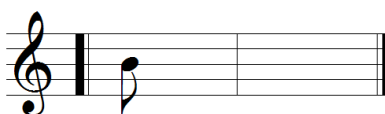
(ii)



(iii)



(iv)



/8

(b) Look at the note below. Name the note and state how many are equal to the quarter note.



Name _____

Number _____

/2

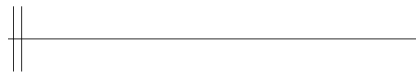
6 Write the named movements on the staves provided.

(Any visual movement must be from the PDQB visual legend).

(i) Right hand beat with single flourish



(ii) Crotchet rest with double flourish/mesh



(iii) Minim rest with cartwheel



(iv) Triplet starting on the left hand



/8

8 On the monotone line below, write two bars of a compound time rhythm and insert the time signature.

Each bar must show different note groupings.



/4

9 On the staff below write out the first 8 bars of a simple time tune from memory.

Remember to include the tune name, style, time signature and correct musical notation including all embellishments and repeats where necessary.

Name of tune _____

Style of tune _____



/16

TOTAL /66